

January 23, 2025

Dear Sir or Madam:

**Re: On-Site Meeting
Thunderbird Municipal Drain
Township of East Garafraxa
Our Reference No. EG-001**

We have been appointed by the Council of the Township of East Garafraxa under Sections 4 and 78 of the Drainage Act, R.S.O. 1990, to investigate a request the Township has received for improvements to the above noted Municipal Drain. Please find enclosed a plan of the drainage basin.

This is the initial meeting under the Drainage Act, and its primary purpose is for affected landowners to provide the engineer with information concerning the possible drainage works.

We will be present at the **Community Room at the Township Office (065371 Dufferin County Road 3, Unit 2, East Garafraxa) on Thursday, February 13, 2025, at 4:00 P.M.** to discuss the area and site of the possible drainage works. After the meeting, we will be available to visit the site.

The draft watershed plan (enclosed) is also available through our website. Please use the following instructions for accessing the meeting materials.

1. Visit www.headwayeng.ca
2. Select '**Public Engagements**' from the upper right corner.
3. Find '**Thunderbird Drain**' and select '**Read More**'.
4. You will be prompted for a password. The Password is: **EG-001**

You, as an owner of land affected by this municipal drainage project, are asked to attend at such time and place if you have any questions or suggestions concerning the potential work.

Furthermore, please bring to the meeting any tile maps that you may have for lands within the watershed as indicated on the attached plan, or any photo of flooding or drainage issues affecting your property.

If you have any questions beforehand, please telephone (226) 243 6614.

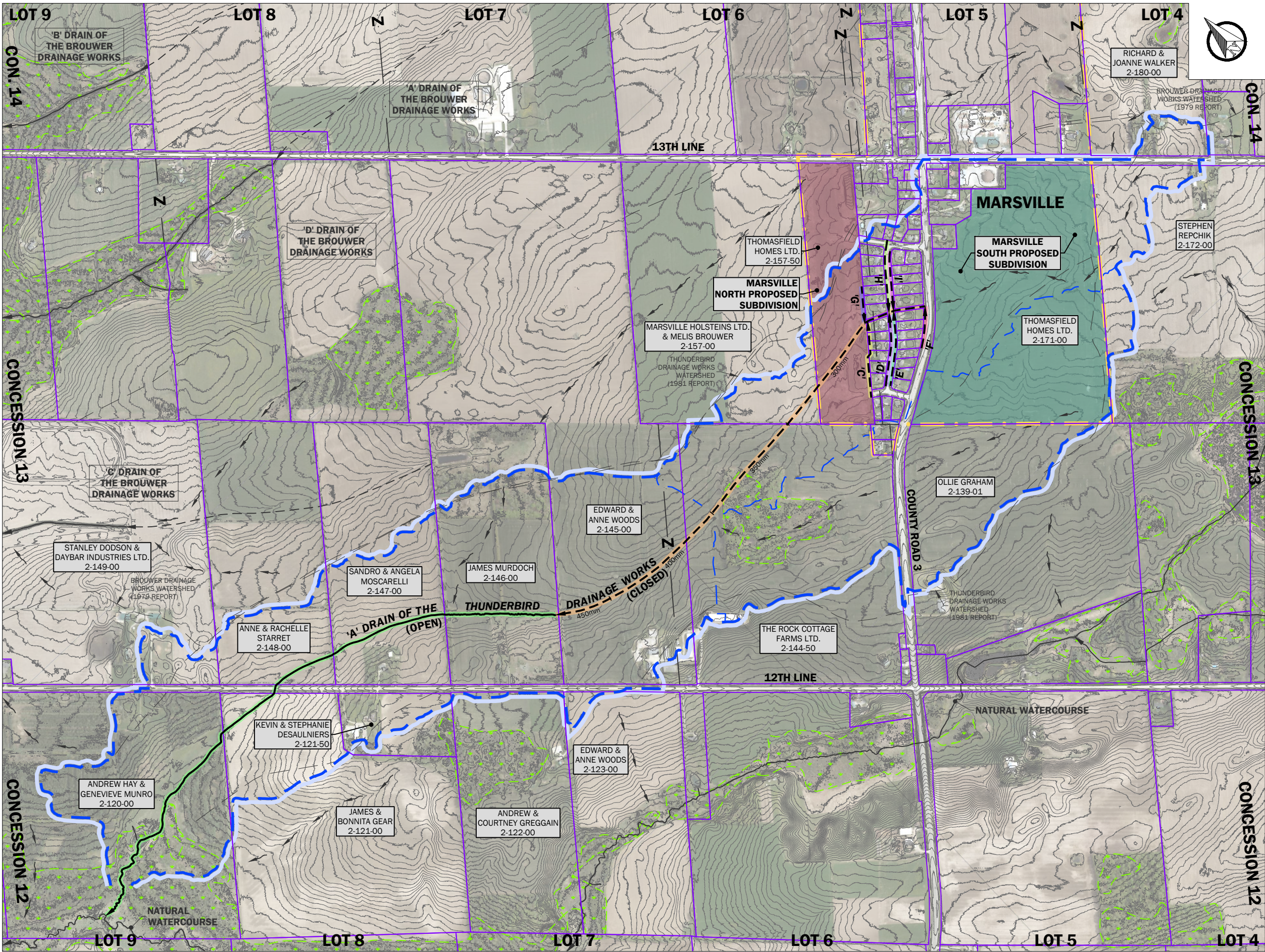
Yours truly,

Michel Terzian
Project Coordinator

HEADWAY ENGINEERING

MT/ru





**THUNDERBIRD
MUNICIPAL DRAIN**

Watershed Plan

- NOTES:**
1. THIS MAP WAS CREATED USING DUFFERIN COUNTY GEOGRAPHIC INFORMATION SYSTEM DIGITAL DATA. THIS MAP IS A SECONDARY PRODUCT WHICH HAS NOT BEEN VERIFIED BY THE DUFFERIN COUNTY.
 2. THE CONTOURS WERE CREATED USING LIDAR DERIVED DIGITAL DATA (2018) FROM LAND INFORMATION ONTARIO.

LEGEND

- LOT/CONCESSION LINE
- PROPERTY LINE
- URBAN BOUNDARY
- MAJOR WATERSHED BOUNDARY
- MINOR WATERSHED BOUNDARY
- WETLAND LIMIT

EXISTING FEATURES:

- DRAIN NAME** OPEN DRAIN WITH CROSSING AND FLOW DIRECTION
- DRAIN NAME** CLOSED DRAIN WITH CATCH BASIN, MANHOLE AND FLOW DIRECTION
- DRAIN NAME** OVERLAND FLOW PATH
- DRAIN NAME** OPEN DRAIN WITH CROSSING AND FLOW DIRECTION
- DRAIN NAME** CLOSED DRAIN WITH CATCH BASIN, MANHOLE AND FLOW DIRECTION

BENCHMARK LOCATION

B.M. 1
123.45
BENCHMARK ELEVATION

JOHN & JANE SMITH
12-345
(12.3 Ha.)
LANDOWNER NAME(S)
ASSESSMENT ROLL No. (ABBREVIATED)
AREA WITHIN WATERSHED

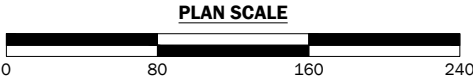
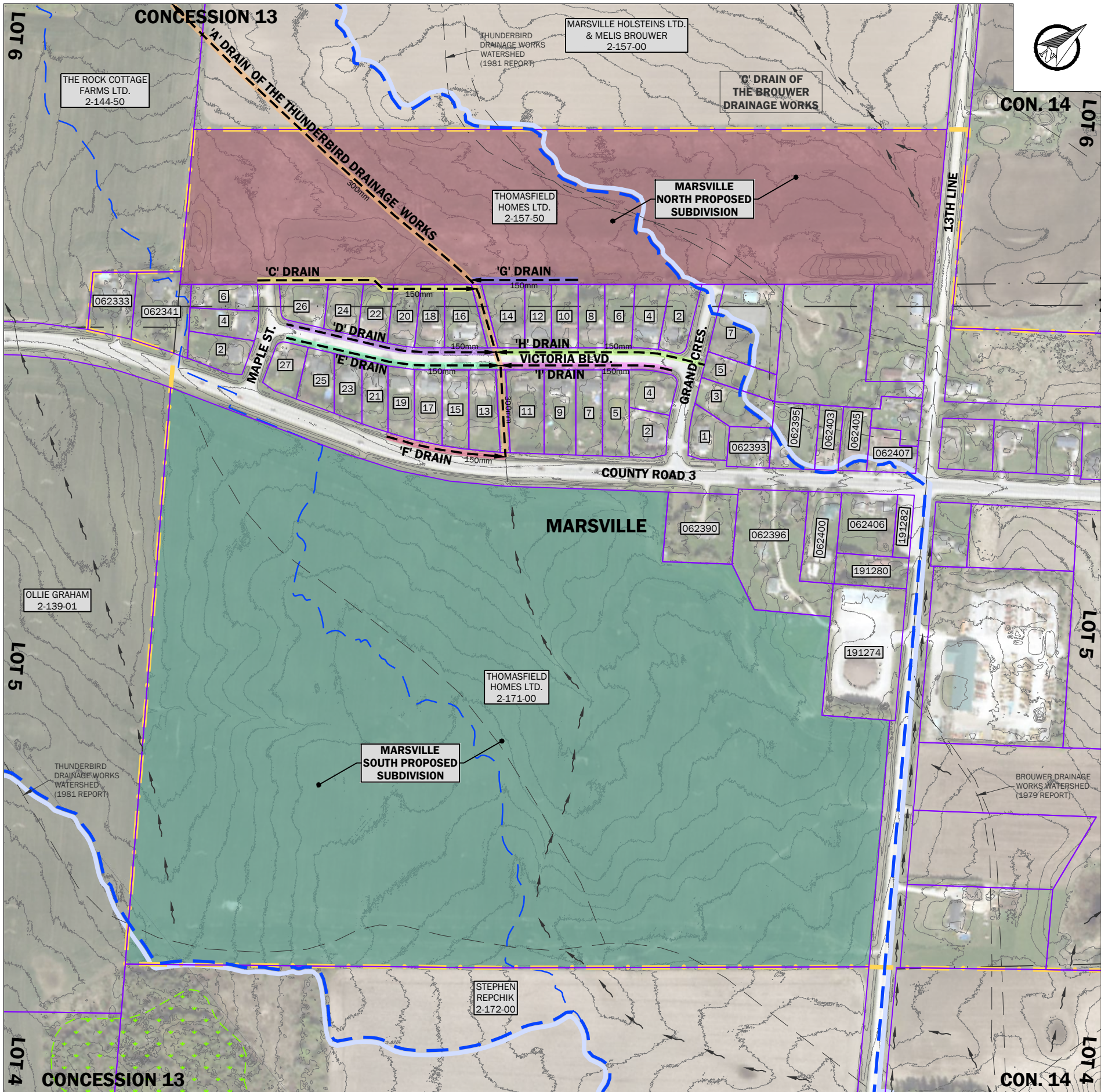
2	ONSITE MEETING	25-02-13
1	PROJECT SCOPE MEETING	24-09-25
No.	REVISION	DATE (YY-MM-DD)



DRAWN BY: R.U.	DESIGNED BY: S.B.	CHECKED BY: S.B.	DRAWING 1 OF 2
DATE: 2025-02-13	REFERENCE No. EG-001		

SCHEDULE OF OWNERSHIP (SMALLER PROPERTIES)

ST. No.	OWNERSHIP	ROLL NO.	WATERSHED AREA
COUNTY ROAD 3			
062333	STEPHEN BAILEY	2-143-90	0.23 HA.
062341	MICHAEL OLLIVIERRA & BEVERLEY CONWAY	2-144-00	0.35 HA.
062390	KENNETH & DONNA BLACKWELL	2-171-10	0.40 HA.
062393	EDWARD KOSTIUK	2-166-00	0.14 HA.
062395	KEVIN FLETCHER	2-165-00	0.24 HA.
062396	PETER STEEN & AMY BLACKWELL	2-167-90	0.74 HA.
062400	NAM & POH PUI	2-167-98	0.25 HA.
062403	DENNIS & DEBORAH MARKLE	2-164-00	0.12 HA.
062405	CHRISTOPHER & MAIKO HOGAN	2-163-00	0.15 HA.
062406	AMITY ENTERPRISES INC.	2-168-00	0.29 HA.
062407	STEPHEN FANCETT	2-161-00	0.15 HA.
13TH LINE			
191274	TOWNSHIP OF EAST GARAFRAXA	2-171-05	0.81 HA.
191280	RICHARD & CAROLINE FLETCHER	2-170-50	0.19 HA.
191282	TOWNSHIP OF EAST GARAFRAXA	2-170-00	0.09 HA.
GRAND CRESCENT			
1	JAMES BROWN	2-167-02	0.15 HA.
2	GREGORY McPHEE & JOHANNE LEDUC	2-167-84	0.15 HA.
3	JAMES & BEVERLEY BROWN	2-167-04	0.18 HA.
4	WILLIAM & BARBARA RODGER	2-167-82	0.14 HA.
5	KEVIN & LIZA HOWES	2-167-06	0.17 HA.
7	TOWNSHIP OF EAST GARAFRAXA	2-167-08	0.43 HA.
MAPLE STREET			
2	ROBERT & LEANDRA BUSCH	2-167-48	0.16 HA.
4	THOMAS FRANKLAND	2-167-46	0.15 HA.
6	ROBERT & HELEN BEATON	2-167-44	0.14 HA.
VICTORIA BOULEVARD			
2	LAURIE JASIUUK	2-167-15	0.15 HA.
4	CRAIG GALLAGHER	2-167-16	0.17 HA.
5	WAYNE & PATRICIA STERANKA	2-167-78	0.19 HA.
6	JANET JACOBS	2-167-18	0.15 HA.
7	STEFAN & DAWN JACOBS	2-167-76	0.19 HA.
8	JOHN STAPLETON	2-167-20	0.14 HA.
9	TODD & MANDY SHUBAT	2-167-74	0.23 HA.
10	JONATHAN & WENDY FINDLAY	2-167-22	0.14 HA.
11	WILLIAM WALKER & PATRICIA WHEELER	2-167-72	0.25 HA.
	TOWNSHIP OF EAST GARAFRAXA	2-167-70	0.07 HA.
12	RICARDO & NANA VALEZI	2-167-24	0.14 HA.
13	DWAYNE & ROSEMARY ARCHBOLD	2-167-68	0.20 HA.
14	JORDAN BURYJ	2-167-26	0.19 HA.
	TOWNSHIP OF EAST GARAFRAXA	2-167-28	0.06 HA.
15	BRIAN & LYNN WARD	2-167-66	0.17 HA.
16	JEFFREY & LINDA PACELLA	2-167-30	0.19 HA.
17	DANIEL & HOLLY THOMSON	2-167-64	0.17 HA.
18	COLE LOVELL	2-167-32	0.14 HA.
19	CHRISTOPHER FOWLER	2-167-62	0.15 HA.
20	PAUL KEMBERS	2-167-34	0.14 HA.
21	LUIS RODRIGUEZ & LUCILA RODRIGUEZ DIAZ	2-167-60	0.15 HA.
22	ROBERT KENKEL & BARBARA McCOLL	2-167-36	0.14 HA.
23	BRIAN & NICOLE BOERSMA	2-167-58	0.15 HA.
24	DAVID & MICHELE CROFT	2-167-38	0.14 HA.
25	WILLIAM & MARGARET MONAGHAN	2-167-56	0.16 HA.
26	THEOFILOS PARUSIS & TAMARA NEILSON	2-167-40	0.15 HA.
27	HEATHER DICEMAN	2-167-54	0.25 HA.



THUNDERBIRD
MUNICIPAL DRAIN

Marsville Detail

NOTES:

- THIS MAP WAS CREATED USING DUFFERIN COUNTY GEOGRAPHIC INFORMATION SYSTEM DIGITAL DATA. THIS MAP IS A SECONDARY PRODUCT WHICH HAS NOT BEEN VERIFIED BY THE DUFFERIN COUNTY.
- THE CONTOURS WERE CREATED USING LIDAR DERIVED DIGITAL DATA (2018) FROM LAND INFORMATION ONTARIO.

LEGEND

	LOT/CONCESSION LINE
	PROPERTY LINE
	URBAN BOUNDARY
	MAJOR WATERSHED BOUNDARY
	MINOR WATERSHED BOUNDARY
	WETLAND LIMIT
	BENCHMARK LOCATION
	BENCHMARK No.
	BENCHMARK ELEVATION
	LANDOWNER NAME(S)
	ASSESSMENT ROLL No. (ABBREVIATED)
	AREA WITHIN WATERSHED
EXISTING FEATURES:	
	OPEN DRAIN WITH CROSSING AND FLOW DIRECTION
	CLOSED DRAIN WITH CATCH BASIN, MANHOLE AND FLOW DIRECTION
	OVERLAND FLOW PATH
	OPEN DRAIN WITH CROSSING AND FLOW DIRECTION
	CLOSED DRAIN WITH CATCH BASIN, MANHOLE AND FLOW DIRECTION

2	ONSITE MEETING	25-02-13
1	PROJECT SCOPE MEETING	24-09-25
No.	REVISION	DATE (YY-MM-DD)