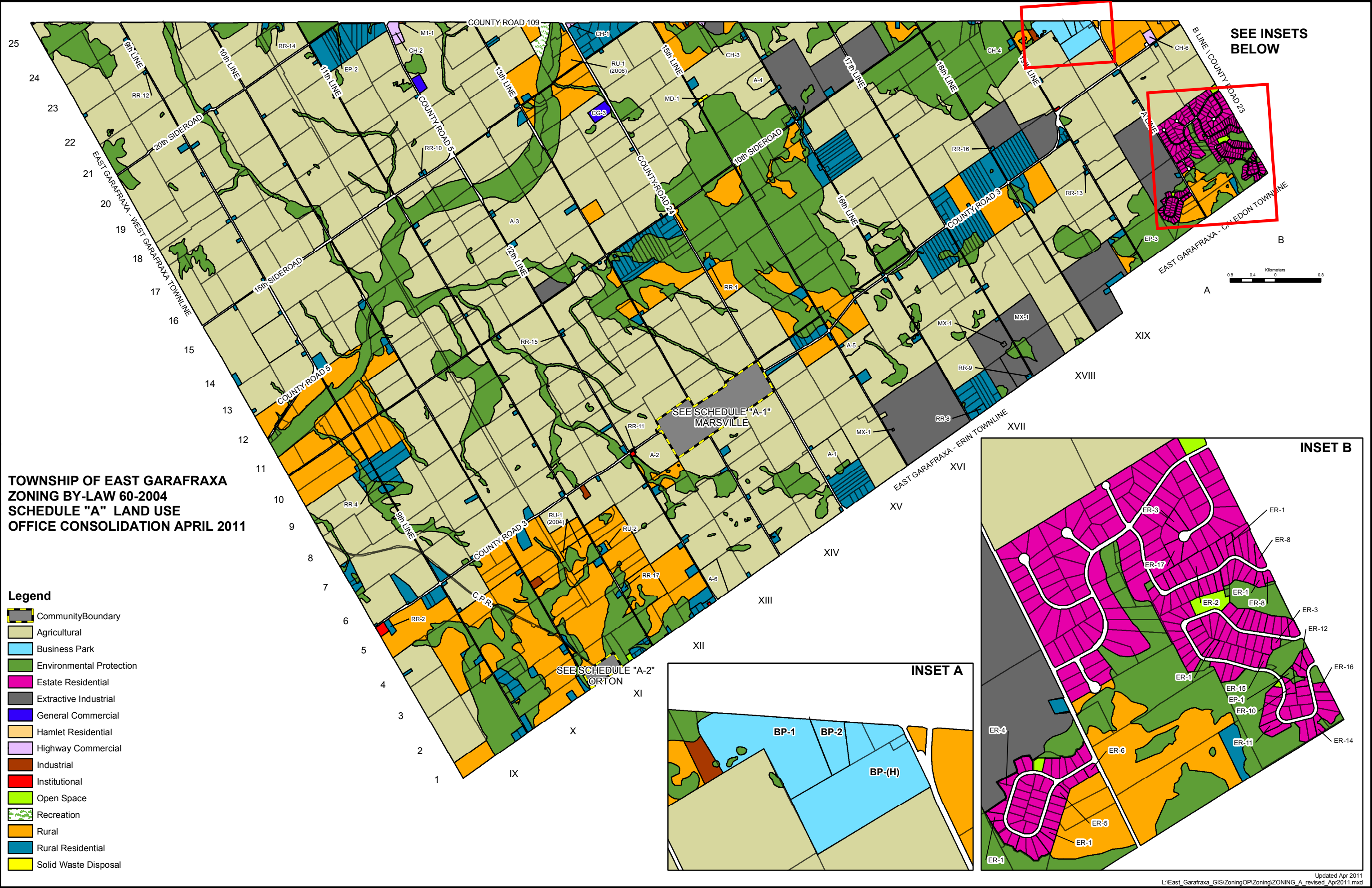
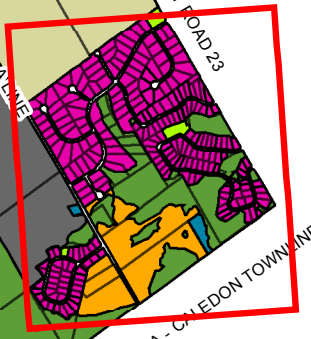


**TOWNSHIP OF EAST GARAFRAXA
ZONING BY-LAW 60-2004
SCHEDULE "A" LAND USE
OFFICE CONSOLIDATION APRIL 2011**

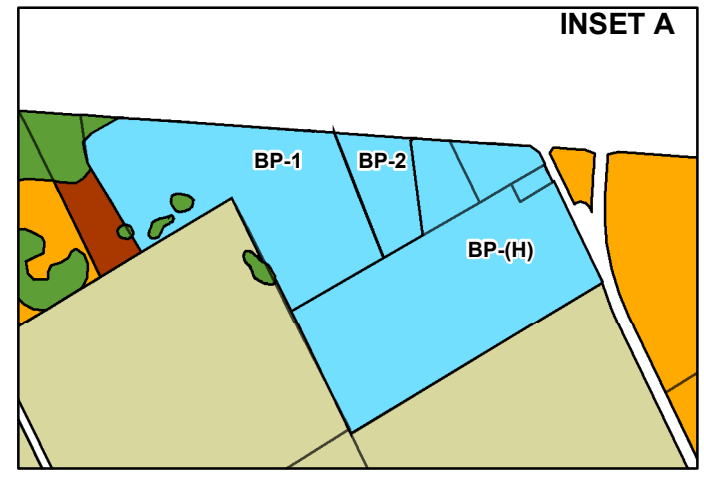
- Legend**
-  Community Boundary
 -  Agricultural
 -  Business Park
 -  Environmental Protection
 -  Estate Residential
 -  Extractive Industrial
 -  General Commercial
 -  Hamlet Residential
 -  Highway Commercial
 -  Industrial
 -  Institutional
 -  Open Space
 -  Recreation
 -  Rural
 -  Rural Residential
 -  Solid Waste Disposal



SEE INSETS BELOW



INSET B



INSET A